

FUJIFILM



X-S1



A camera so versatile
there is no image you can't capture.

In order to capture all the wonder hidden in the world, this camera exploits the full potential of its incredible focal length range allowing you to capture infinite compositions. In your hand is the power to capture detail as far and wide as the eye can reach. Here is the capability to bring distant beauty close to you. And a talent for revealing exciting discoveries in the smallest subjects. All the performance you've ever wanted in a camera is built into this single instrument. Every key device is optimized and operability is taken to extremes to realize "vivid clarity over the full zoom range".

X-S1

With the X-S1 the worlds beauty is no longer hidden from view.



The ability to capture detail no matter how far or wide and just as your eye sees it.

24mm* Wide Angle

Landscapes shot with the wide angle lens capture edge-to-edge sharpness. Without this camera, just imagine the moments lost forever.

Optimized for exquisite detail all the way to the edge of the image.

The FUJINON Lens and the EXR CMOS Sensor are the cutting edge of original FUJIFILM high-performance technology. These key devices have not only been adopted in the new X-S1, but also thoroughly optimized to work together, resulting in a synergy that produces high-resolution photos with exceptional resolution from the center to the edge of the image with extremely few aberrations.

*35mm film equivalent ©Sample photos are simulated images.



The ability to bring distant beauty close to you.



624mm* 26X zoom

Telephoto shots without fear of blur. The confidence of “unshakeable” long-zoom performance. Without this camera, just imagine how many beautiful moments would be out of your reach.

Complete control of the camera, without fear of camera shake.

Equipped with a newly developed image stabilization mechanism, X-S1 effectively compensates for camera shake even when you press the shutter to capture a subject at extreme zoom.



The talent for revealing exciting discoveries
in the smallest subjects.



1cm SUPER MACRO

Without this camera, just imagine the world of beauty you'd be missing right before your eyes.

Get as close as 1cm away and shoot from any angle you desire, thanks to the tilt LCD.

With Super Macro, you can bring the lens as close as 1cm from your subject. The freedom to adjust the LCD screen to any angle lets you stretch your arms down to ground level and comfortably view and compose the perfect shot.



The feel of precision zoom control and exactly the focal length you want.


Fast and precise zoom control for the wide photographic range of X-S1.

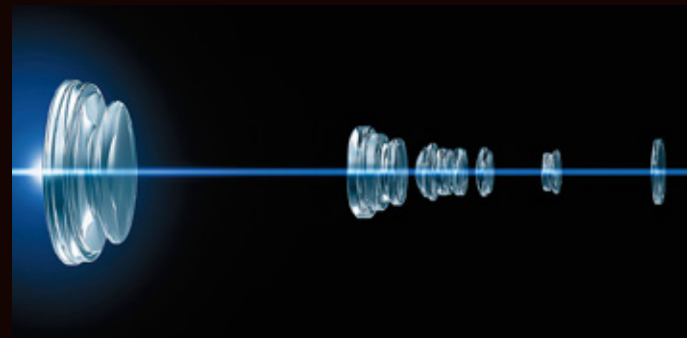
X-S1 lets you fine tune every shot to perfection.

In the easy-to-hold slim zoom lens barrel, the metal cam-driven zoom mechanism delivers a subtle sensation of torque for smooth and precise adjustment.



NEW FUJINON LENS

 Extensive focal length range (24mm~624mm*) and bright F-values (F2.8-F5.6)



Featuring a 12-group, 17-element lens configuration, the manual optical 26x zoom is a masterpiece of FUJINON technology. The extravagant adoption of high optical performance glass lens elements (aspherical, high refractive index, and ED glass lenses) make the exceptional brightness of F2.8 at wide angle and F5.6 at telephoto possible.

High image quality ensured by effective “camera shake” correction.



ED Lenses for prevention of chromatic aberrations and muddy colors.

In order to minimize chromatic aberration which tends to occur when taking telephoto shots with a long zoom lens, two ED lenses made of extra-low dispersion glass have been adopted in the lens configuration. Adoption of one large-diameter ED lens in the first lens group reduces axial chromatic aberration that can occur at high zoom settings.

Super EBC for High Image Quality with Exceptional Clarity

Lens elements have been treated with FUJINON's originally developed multilayer Super EBC (Electron Beam Coating), a process that reduces ghosting and lens flare, and delivers superb clarity even under severe shooting conditions.



9-blade aperture diaphragm for an expressive “bokeh” effect

Special attention has been paid to enabling a beautiful “bokeh” effect. The 9-blade aperture diaphragm lets you artistically put the focus on your subject while creating a softly defocused near-circular background.



ELECTRONIC VIEWFINDER[EVF]

Large High-performance EVF displays the scene in bright beautiful detail

Framing and composing shots while viewing the large 0.47-inch screen with 1,440,000-dot resolution in the X-S1 electronic viewfinder is a true pleasure. Light is captured with amazing fidelity by 2 glass lens elements and 1 aspherical lens, and the image is displayed on a bright LCD panel. The EVF boasts a wide 26° field of vision and brightness.



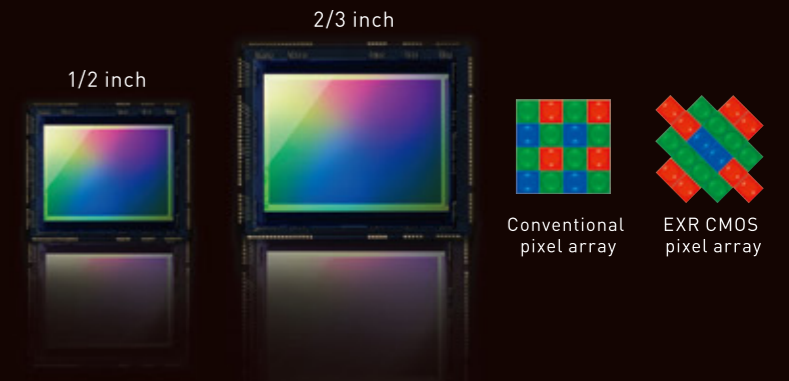
Even at telephoto, what you see in the viewfinder is what you get in your photo.

The unique advantage of EVF is its ability to give you an accurate depiction of what the final image will look like. Depth of field, colour temperature, colour mode and other desired image quality settings are reflected in the image displayed in the viewfinder without the influence of the lens F-value so you can compose the image without guesswork. The final photo reflects exactly what you aimed to create in the viewfinder.

EXR TECHNOLOGY

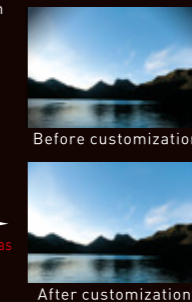
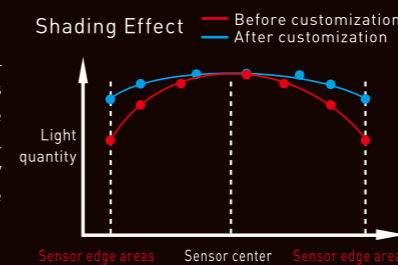
 12-Megapixel 2/3-inch EXR CMOS sensor

Only the EXR CMOS sensor can intelligently switch between three original technologies depending on the scene and always capture the moment in exquisite detail and with impressive image quality. Featuring FUJIFILM's bespoke pixel array, the large 2/3-inch EXR CMOS sensor captures images with impressive resolution.






Optimization of the Sensor and Lens

Sufficient light quantity is collected not only in the center of the sensor, but all the way to the edge by optimization of both the image sensor and lens.



Automatically matches the scene to the most effective capture technology

Responding to lighting, distance and other conditions, the EXR CMOS sensor automatically switches to the optimum capture technology.

-  High Resolution (12 Megapixels)
-  Wide Dynamic Range (up to 1600%)
-  High Sensitivity & Low Noise (ISO100~12800)

 EXR Processor taps the full potential of the lens and sensor

Processing the vast amounts of image signal data captured by the FUJINON lens and EXR CMOS sensor with precision at high speed, FUJIFILM's originally developed EXR Processor translates the highly accurate image data into rich photographic expression.



Faster response for fleeting moments

Fast 0.18 sec. auto focus, 0.01-sec. near-instant shutter time lag and fast 0.6 sec. camera startup. Every facet of operation is accelerated so you will never miss a shot.

High quality Full HD movie

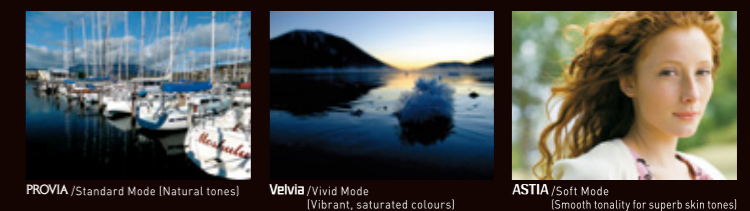
Capture all the action in full 1080p HD (30fps/H.264 High Profile). Use the manual focus to add the professional touch of depth-of-field shifts, blur-out fades and other special effects to your movie. While shooting movies, you can also use manual focus for a creative touch or capture still photos without interrupting movie shooting.

12 Megapixel High-speed Continuous Shooting

High-speed continuous shooting lets you capture moving subjects and other action scenes at 7 frames per second at the full 12-megapixel resolution [L-size]. Set the resolution 6 megapixels [M-size] for even faster shooting at a maximum of 10 frames per second.

Explore Photographic Expression with FUJIFILM's Film Simulation Modes

Faithfully reproducing the distinctive colours and qualities of FUJIFILM films loved by professional photographers, Film Simulation also lets you select from various Black & White modes.



X-S1 PERFORMANCE

Control comes naturally as the rich functionality X-S1 travels with you into new realms of photography.



Precision Grip of All-Metal Dials

Precision milled from solid metal, the mode and command dials not only accent the high quality look, but also respond to your touch with just the right amount of torque resistance and a satisfying 'click' sensation.

All-Metal Lens Hood for the Look and Feel of Quality

The pursuit of premium quality extends to the high-precision finish of the all-metal Lens Hood and Lens Ring add to the pleasure of ownership.



Leather-like Rubber Coating

Coated in a leather-like texture for a high quality finish, the X-S1 welcomes your hands with a comfortable and sure grip.



Large 3.0-inch TILT LCD

Featuring the freedom of a large "tilting" 3.0-inch LCD, X-S1 lets you shoot from close to the ground or above your head. When shooting in bright outdoor conditions, the built-in Monitor Sunlight Mode displays a clear view of the scene for comfortable composition.



"Made in Japan", the Mark of Premium Quality

Each and every part of this camera is the product of high precision engineering and the highest quality standards.



Flash

Superb flash performance even close up

Simultaneously raising and sliding the flash slightly forward, the pop-up flash system lets you take flash macro shots as close as 0.3m from the subject.



Multi-function Mode Dial

2 Fn Buttons for Assignment of Frequently Used Functions

Customize operation with smooth one-touch control during shooting, just by assigning frequently used functions to two step-saving function buttons (Fn1/Fn2).

Save Custom settings

Create, save and assign custom settings to the Custom Modes (C1/C2/C3) on the Mode Dial for instant recall of user-defined settings from ISO sensitivity to white balance.

High-Speed Continuous Shooting & Bracketing Functions

Shoot at a maximum burst speed of 10 frames per second.* Even at full 12-megapixel ("L" Size) resolution, X-S1 captures the action at a blazing 7 frames per second. In addition, 4 different auto bracketing functions (AE, ISO Sensitivity, Dynamic Range and Film Simulation) invite exploration of a range of photographic expression.

EXR AUTO

Automatic recognition and optimised settings for 99 shooting patterns.

Motion Panorama 360

Immersive 360° Panoramic Photos

Shoot giant panoramas up to 360°. Later when you play them back on your camera or personal computer, the ends of the image are stitched together for enjoyment of a seamless "cylinder" view.



Pro Low-Light Mode captures 4 exposures at high speed and high sensitivity, and precisely combines them into a single image in the camera. Effectively eliminating noise, the merged exposures produce a beautiful photo with amazing clarity.

*This mode cannot be used with moving subjects. Also please use a tripod or other method to stabilize the camera.



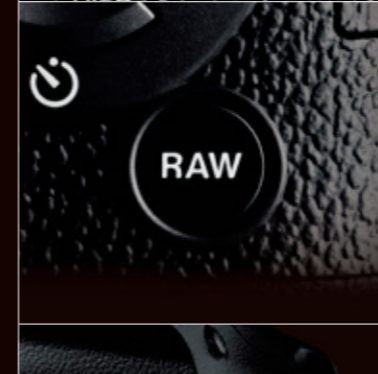
RAW

RAW Button

One touch lets you switch to JPEG+RAW and capture the next scene in both formats.

In-camera RAW Converter

This built-in function "develops" your captured RAW Data into an image in the camera, eliminating the need to transfer data to a PC to convert, edit and view your results. The RAW Converter not only reflects account exposure compensation, white balance and other camera settings, but also can apply Film Simulation modes.



Focusing

Focus Mode Selector

The focus mode selector lever on the front of the camera lets you easily switch between AF/S (Single AF), AF/C (Continuous AF) and MF (Manual).

Selectable AF with a 49-point Metering Matrix

Freely change the AF frame position and size within the 49-point matrix of the focusing area to pinpoint the focusing.



High-speed Auto Focus

The high-speed signal readout of the fast EXR CMOS sensor and the fast processing speed of the EXR Processor drives the incredibly fast contrast detection AF performance.

Manual Focus

While checking the image in Live View, rotate the focus ring for razor-sharp focus.



White Balance

In addition to Auto White Balance, users can choose from 6 white balance presets designed for different light sources or select the optimum Kelvin value.



Battery

Adoption of the rechargeable NP-95 lithium-ion battery delivers up to 460 shots when composing and viewing results with the LCD and a maximum of 500 shots when only the EVF is used.



SPECIFICATIONS

X-S1

Number of effective pixels	12.0 million pixels
Image sensor	2/3-inch EXR CMOS with primary color filter
Storage media	Internal memory (approx. 26 MB) SD / SDHC / SDXC(UHS-I) memory card *1
File format (still image)	JPEG (Exif Ver 2.3), RAW (RAF format), RAW+JPEG (Design rule for Camera File system compliant / DPOF-compatible)
(movie)	H.264(MOV) with Stereo sound
Number of recorded pixels	L : <4:3> 4000 x 3000 <3:2> 4000 x 2664 <16:9> 4000 x 2248 <1:1> 2992 x 2992 M : <4:3> 2816 x 2112 <3:2> 2816 x 1864 <16:9> 2816 x 1584 <1:1> 2112 x 2112 S : <4:3> 2048 x 1536 <3:2> 2048 x 1360 <16:9> 1920 x 1080 <1:1> 1536 x 1536 <Motion Panorama> 360° Vertical 11520 x 1624 Horizontal 11520 x 1080 180° Vertical 5760 x 1624 Horizontal 5760 x 1080 120° Vertical 3840 x 1624 Horizontal 3840 x 1080
Lens (name)	Fujinon 26x optical zoom lens
(focal length)	f=6.1-158.6mm, equivalent to 24-624mm on a 35mm camera
(full-aperture)	F2.8(Wide) - F5.6 (Telephoto)
(constitution)	12groups 17lenses (4 aspherical molded lenses, 2 ED glass lenses included)
Digital zoom	Intelligent digital zoom approx. 2x (1.4) (up to 52 x when combined with optical zoom)
Aperture	F2.8-F11(Wide) F5.6-F11(Telephoto) 1/3EV step (controlled 9-blade aperture diaphragm)
Focus distance (from lens surface)	Normal : Wide: Approx. 30cm / 0.9ft. to infinity Telephoto: Approx. 2.0m / 6.5ft. to infinity Macro : Wide: Approx. 7cm - 3.0m / 2.8in. - 9.8ft. Telephoto: Approx. 2.0m - 3.5m / 6.5ft. - 11.5ft. Super Macro : Approx. 1.0cm -1.0m / 0.4in. - 3.3ft.
Sensitivity	AUTO (400) / AUTO (800) / AUTO (1600) / AUTO (3200) Equivalent to ISO 100/200/250/320/400/500/640/800/1000/1250/1600/2000/2500/3200/4000*/5000*/6400*/12800* (Standard Output Sensitivity) *ISO4000/5000/6400 : M mode or lower, ISO12800 : S mode
Exposure control	TTL 256-zones metering, Multi, Spot, Average
Exposure mode	Programmed AE, Aperture Priority AE, Shutter Priority AE, Manual
Shooting modes (MODE DIAL)	SP: Natural Light & Flash, Natural Light, Portrait, Portrait Enhancer, Dog, Cat, Landscape, Sport, Night, Night (Tripod), Fireworks, Sunset, Snow, Beach, Party, Flower, Text EXR, AUTO, Adv., SP, C3, C2, C1, M, A, S, P
Image stabilizer	Lens shift type
Face detection	Yes
Exposure compensation	-2.0EV - +2.0EV 1/3EV step
Shutter speed	(Auto mode) 1/4 sec. to 1/4000* sec., (All other modes) 30 sec. to 1/4000* sec.
Continuous shooting (TOP)	Super High : approx. 10fps (Size M,S) High : approx. 7fps (Size L,M,S) Middle : approx. 5fps (Size L,M,S) Low : approx. 3fps (Size L,M,S) *SD memory card with a class 4 write speed (4 MB/sec.) or better is recommended. *The frame rate varies depending on the shooting conditions or numbers of frames in continuous shooting.
(others)	Best Frame capture: Super High : approx. 10fps 8/16 frames (Size M,S) High : approx. 7fps 8frames (Size L,M,S) /16 frames (Size M,S) Middle : approx. 5fps 8frames (Size L,M,S) /16 frames (Size M,S) Low : approx. 3fps 8frames (Size L,M,S) /16 frames (Size M,S)
Auto bracketing	AE Bracketing : ±1/3EV, ±2/3EV, ±1EV Film Simulation Bracketing : PROVIA/STANDARD, Velvia/VIVID, ASTIA/SOFT Dynamic Range Bracketing : 100%, 200%, 400% ISO Sensitivity Bracketing : ±1/3EV, ±2/3EV, ±1EV
Focus (mode)	Single AF / Continuous AF (EXR AUTO, Movie), Manual AF (One-push AF mode included)
(type)	TTL contrast AF, AF assist illuminator available
(AF frame selection)	Multi, Area, Tracking
White balance	Automatic scene recognition Preset: Fine, Shade, Fluorescent light (Daylight), Fluorescent light (Warm White), Fluorescent light (Cool White), Incandescent light, Custom, Color temperature selection(2,500K-10,000K)
Self-timer	10 sec./ 2 sec. delay, Auto release
Flash	Auto flash (super intelligent flash) Effective range : (ISO AUTO(800)) Wide: Approx. 30cm - 8.0m / 0.9ft. - 26.2ft. Telephoto : Approx. 2.0m - 4.0m / 6.5ft. - 13.1ft.
Flash modes	Red-eye removal OFF: Auto, Forced Flash, Suppressed Flash, Slow Synchro. Red-eye removal ON: Red-eye Reduction Auto, Red-eye Reduction & Forced Flash, Suppressed Flash, Red-eye Reduction & Slow Synchro.
Hot shoe	YES
Viewfinder	0.47-inch, approx. 1,440,000 dots, TFT color LCD monitor, approx. 100% coverage Diopter adjustment : -5 - +3m-1(dpt)
LCD monitor	3.0-inch, approx. 460,000 dots, TFT color LCD monitor, approx. 100% coverage
Movie recording	1920 x 1080 pixels / 1280 x 720 pixels / 640 x 480 pixels (30 frames / sec.) with stereo sound Optical zoom (manual) can be used.
Photography functions	EXR mode (EXR Auto / Resolution priority / High ISO & Low noise priority / Dynamic range priority), Face recognition, Face Detection, Auto red-eye removal, Film simulation, Framing guideline, Frame No. memory, Histogram display, Advanced mode (Motion panorama360, Pro focus, Pro low light), High Speed Movie (70 / 120 / 200 frames/sec.), Electronic level, One-touch RAW, Advanced Anti Blur, Focus check, Color space
Playback functions	Face Detection, Auto red-eye removal, Multi-frame playback (with micro thumbnail), Protect, Crop, Resize, Slide show, Image rotate, Voice memo, Histogram display, Exposure warning, Photobook assist, Image search, Favorites, Mark for upload, Panorama, Erase selected frames, RAW conversing
Other functions	PictBridge, Exif Print, 35 Languages, Time difference, Silent mode, Sutter sound
Terminal (Video output)	NTSC / PAL selectable with Monaural sound
(Digital interface)	USB 2.0 High-Speed
(HDMI output)	HDMI Mini connector
(External microphone)	φ3.5 Mini with Stereo sound
Power supply	NP-95 Li-ion battery (included)
Dimensions	135(W) x 107(H) x 149(D)mm / 5.3(W) x 4.2(H) x 5.9(D)in.
Weight	Approx. 945g / 33.3oz. (including battery and memory card) Approx. 905g / 31.9oz. (excluding battery and memory card)
Operating temperature	0°C - 40°C
Operating humidity	10% - 80% (no condensation)
Guide to the number of available frames for battery operation	approx. 460 frames *2 approx. 500 frames (using EVF)

*1 Please see the Fujifilm website to check memory card compatibility.
*2 CIPA Standard



OPTIONAL ACCESSORIES



● Shoe Mount Flash EF-20



● Shoe Mount Flash EF-42



● Remote release RR-80

ACCESSORIES INCLUDED

- Li-ion battery NP-95
- Battery charger BC-65N
- Shoulder strap
- Lens cap and Lens cap cord
- Lens hood
- USB cable
- CD-ROM
- Owner's manual

<http://fujifilm-x.com/x-s1/>

©All photos, illustrations, drawings and other images in this brochure are intended for illustrative purposes only. Microsoft, Windows and Windows logo are trademarks, or registered trademarks of Microsoft Corporation in the United States and/or other countries. Macintosh and Mac OS are trademarks of Apple Computer, Inc., registered in the U.S. and other countries. SDXC logo is a trademark. All other trademarks are the property of their respective holders. SILKPIX® is a registered trademark of Ichikawa Soft Laboratory Co., Ltd. in Japan.



Specifications are subject to change without notice

For more information, please visit our website

http://www.fujifilm.com/products/digital_cameras/index.html

FUJIFILM
FUJIFILM Corporation

Ref. No. EB-1060E (SK·10·12·F2586·F9711) Printed In Japan © 2011 FUJIFILM Corporation